

LOWER WALL FRAME LAYOUT

CEILING HEIGHT - 2700mm

STRUCTURAL DETAILS

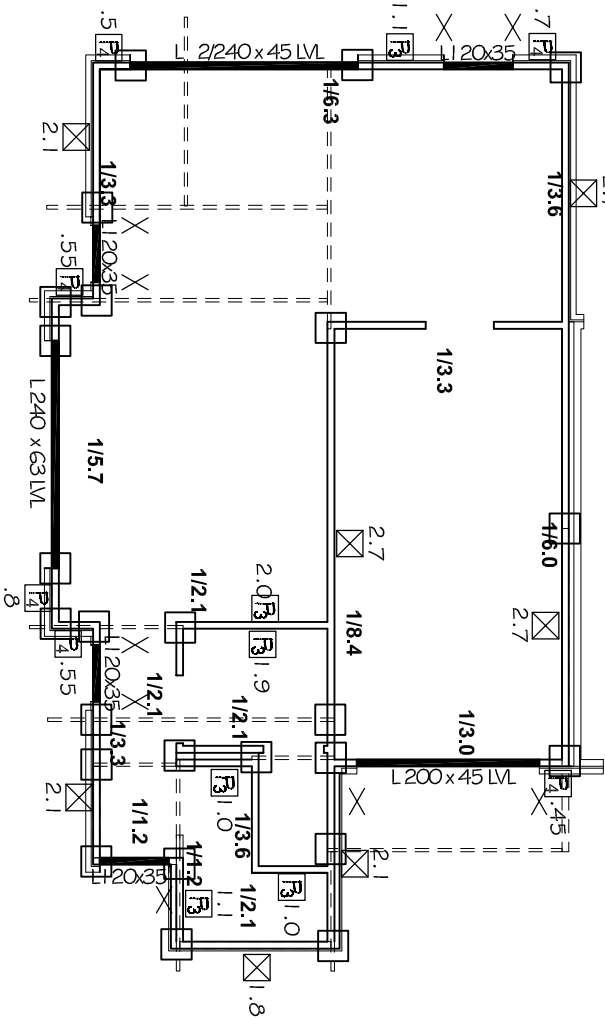
- T # B PLATES 90x35 MGP10 UNO
- EXTERNAL STUDS 90x35 MGP10 @ 600 CTS UNO
- STUDS POSITIONED DIRECTLY BENEATH RAFTER/TRUSSES @ MAX 600MM CTS
- INTERNAL STUDS 90x35 MGP10 @ 600 CTS UNO
- STRUTS BLOCKED OVER 2 SINGLE 90X35 MGP10 STUDS WITH 90x70 MGP10 BLOCKING
- NOGGING 90x35 PINE @ 1350 MAX CTS
- 1/90X35 MGP10 DIRECTLY BENEATH INTERNAL SUPPORT
- ALL STRUCTURAL MATERIAL TO BE MGP10, UNO.
- SILL TRIMMERS DOUBLED WHERE OPENING < 3.0 ms
- ALL MATERIALS ALLOWED AS PER AS 1684.2-2010
- WET AREA STUDS @ 450 CTS
- WITH 3 STUD JUNCTIONS

NON-LOAD BEARING WALLS UNDER TRUSSES SET DOWN 20mm

STUDS AT SIDES OF OPENINGS AND POINT LOAD STUDS AS SHOWN BELOW

- △ = 1/90x45 MGP10
- X = 2/90x35 MGP10
- = 2/90x45 MGP10

PB 290 x 42 L05P

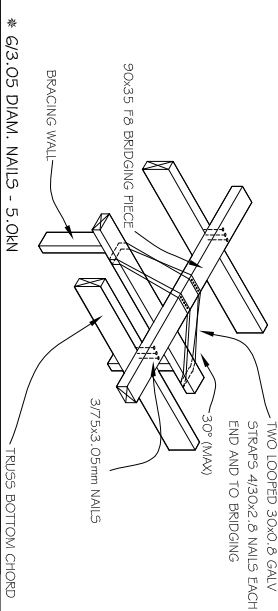


* HME OSBRACE SYSTEM TYPE #3, 6.0kN/m

The resistances for Type #3 may be doubled when sheathed on BOTH SIDES of indicated walls, provided the tie-down requirements specified on Form # Tie-down Sheet for bottom plates to concrete slab are also doubled.

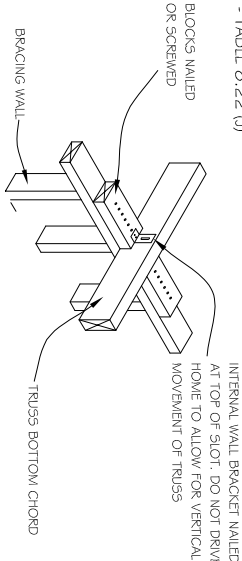
Normal Framing :
1/75mm masonry nail, screw/bolt @ 600 cts max
Specific Tie-Down Framing :
1/10x100 screw bolt @ 600 cts, # 100mm to openings w/ 40x40 square washer,

TOP PLATE FIXING DETAILS - PARALLEL TO WALL



* 6/3.05 DIAM. NAILS - 5.0kN

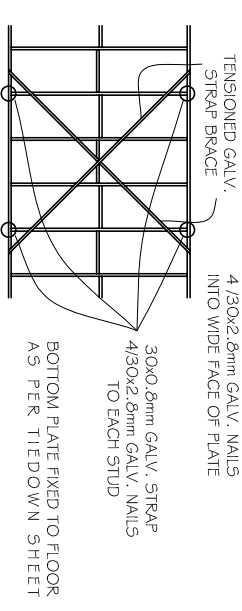
TOP PLATE FIXING DETAILS - PERP. TO WALL



* 6/3.05 DIAM. NAILS - 5.0kN
* 3/16.14 TYPE 17 SCREWS - 1.0kN

BRACING UNITS

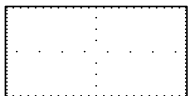
TENSION STRAP BRACE - TABLE B.18 (D)



☒ - 1800mm (5.4kN) ☒ - 2100mm (6.3kN)

☒ - 2400mm (7.2kN) ☒ - 2700mm (8.1kN)

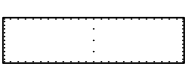
OS BRACE TYPE #3 | SYSTEM 6.0kN/m OR EQUIVALENT



- FASTENER SPACING
 - 40mm TOP & BOTTOM PLATES
 - 150mm VERTICAL EDGES
 - 300mm INTERMEDIATE STUDS
- MINIMUM SECTION OF BRACING OF 900mm
- 2mm DEANSON GAP AROUND TRIMMER OF EXTERIOR PANEL
- 2.8x30mm FLAT HEAD GALVANISED OR CORROSION RESISTANT NAILS, OR THEIR GUN DRIVEN EQUIVALENT, MINIMUM OF 15mm FROM EDGE OR 8mm WHERE PANELS ARE FIXED TO INTERNAL FRAMING

☒ - 900mm (5.4kN) ☒ - 1200mm (7.2kN)

OS BRACE TYPE #4 | SHORT WALL BRACING | SYSTEM 2.2kN/m OR EQUIVALENT



- FASTENER SPACING
 - 80mm TOP & BOTTOM PLATES
 - 150mm VERTICAL EDGES
 - M10 x 70mm COACH SCREWS WITH 50x50x3mm WASHERS IN EACH CORNER OF EACH SHEATHED SHORT WALL SECTION.
 - MINIMUM SECTION OF BRACING OF 450mm
 - 2mm DEANSON GAP AROUND TRIMMER OF EXTERIOR PANEL
 - 2.8x30mm FLAT HEAD GALVANISED OR CORROSION RESISTANT NAILS, OR THEIR GUN DRIVEN EQUIVALENT, MINIMUM OF 15mm FROM EDGE OR 8mm WHERE PANELS ARE FIXED TO INTERNAL FRAMING

☒ - 450mm (1.0kN) ☒ - 600mm (1.3kN)

○ ADDITIONAL ANGLE BRACE

WINDSPEED (per residence) : N1

W1 78 m² = 44 kN

W2 42 m² = 24 kN

S:\OAKRIDGE TAKEOFFS\DS\D'ANDREA\541 ANZAC HWY\D1\01 541 ANZAC.dwg

DWELLING 1

D'ANDREA	D'ANDREA	AMENDMENTS		OAKRIDGE BUILDING SERVICES	
	541 ANZAC HWY, GLENELG EAST	SHEET 1/5	DATE : 28/05/18	PH : 83837222	FAX : 83837225
Detailer: Matt Opie		Signed:		JOB No. IT09727	
				W1	W2